

Пользователь / Username	puhra
Дата / Date	15.09.2024 02:08:42
Имя файла / Filename	Рост (размер) 74, Обхват груди 51, Обхват талии 48, Обхват бедер 52, Длина спины
Формат / Format	A4
Кол-во листов / Pages	10



## ВАЖНО

При печати этого PDF файла «Масштабирование страницы» или «Page scaling» должно быть равно «Нет» или «No»

Печать производите в «Истинный размер» или «Actual size»

Подробнее смотрите в разделе «Помощь» - «Печать PDF файлов»

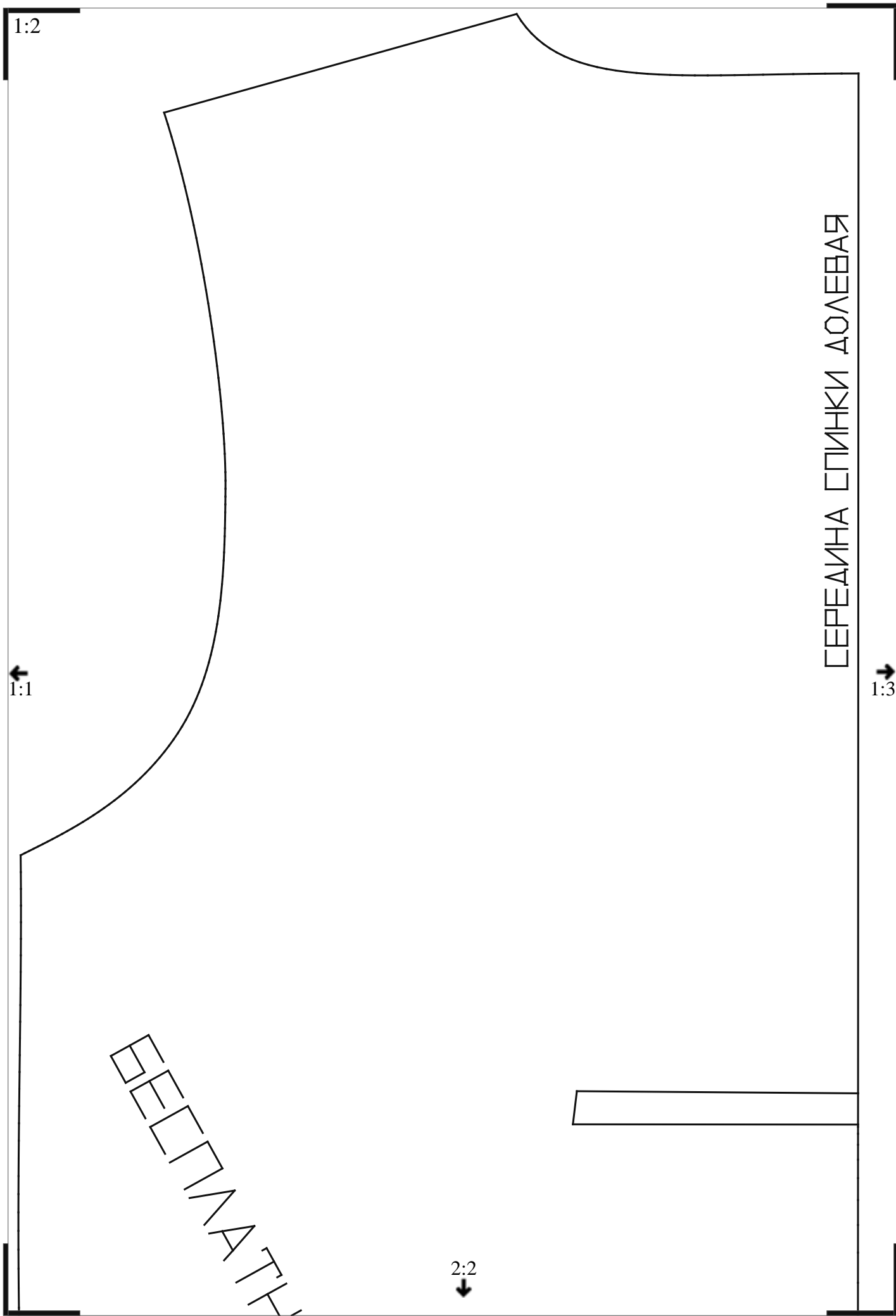
1:1

1:2

2:1

СЕРЕДИНА ПЕРЕДА

БЕЗПЛАТНО



1:2

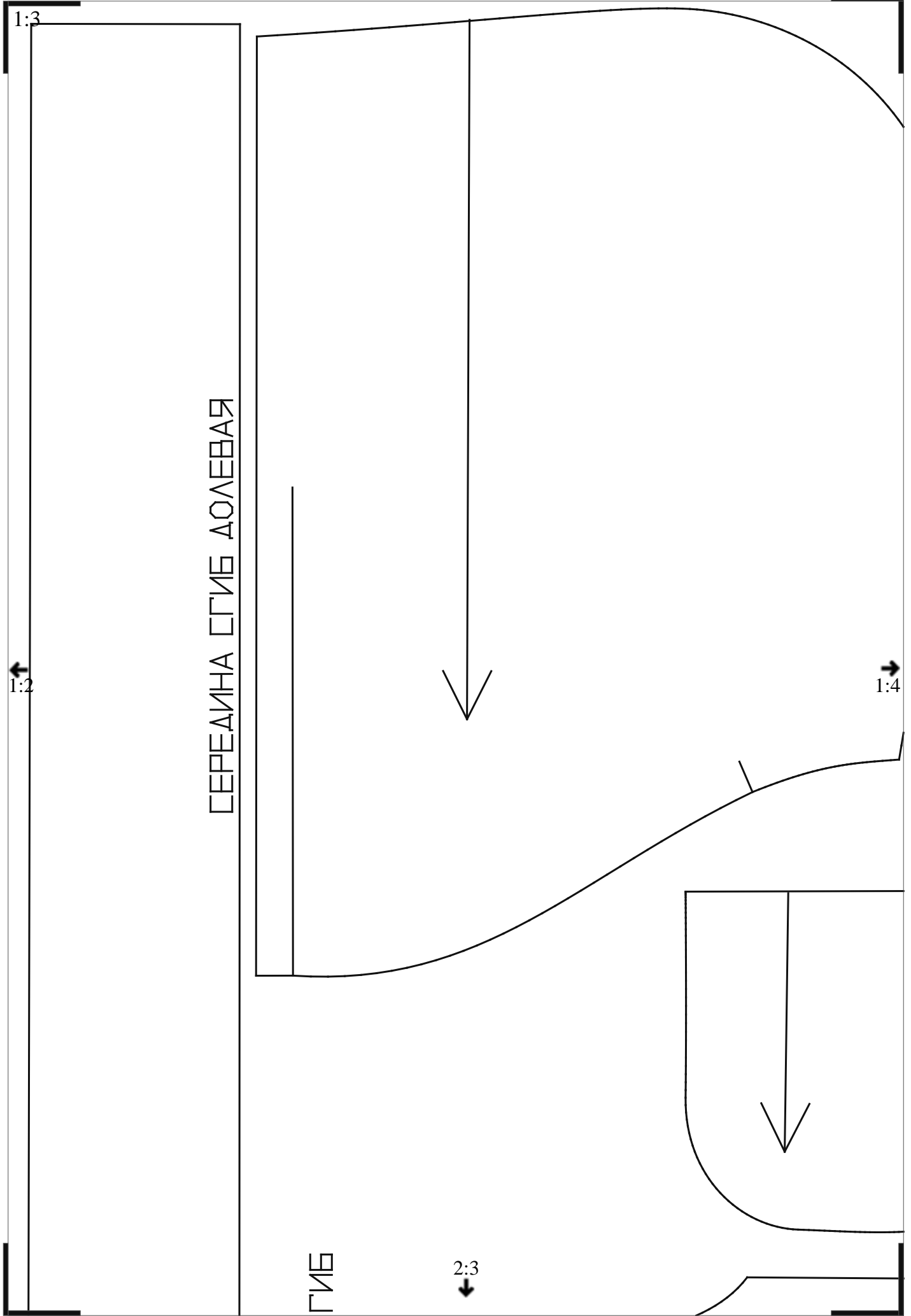
←  
1:1

→  
1:3

↓  
2:2

СЕРЕДИНА СПИНКИ ДОЛЕВАЯ

ПЕЧАТ



СЕРЕДИНА СГИБ ДОЛЕВАЯ

СГИБ

1:2

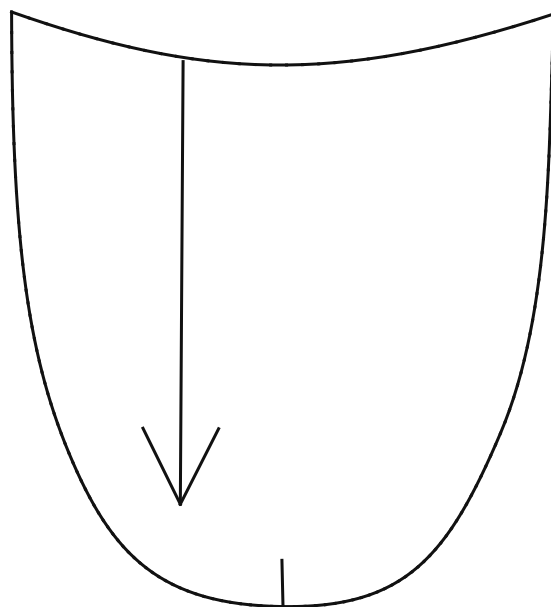
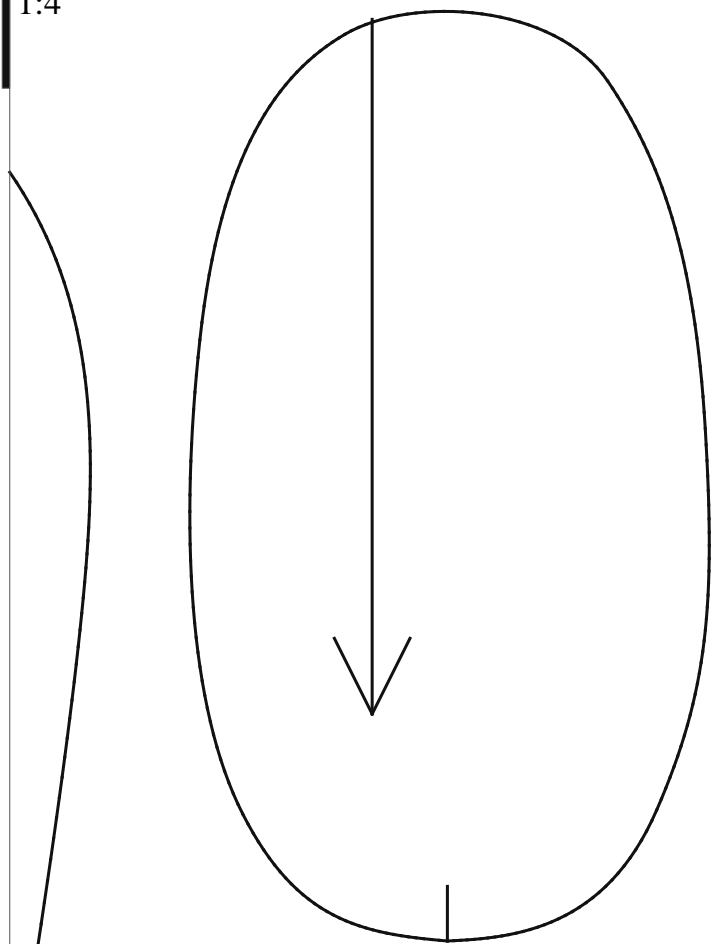
1:3

1:4

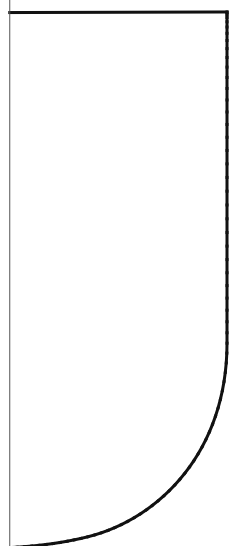
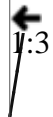
2:3

2:4

1:4



1:3



Bottom

2:4



2:1

1:1



2:2



3:1



MIRPILAR.COM

A technical drawing of a rectangular frame. A diagonal line runs from the top-left corner towards the bottom-right. Along this line, there are several small squares and rectangles, some of which are labeled with numbers: 1, 2, 3, 4, 5, 6, 7, 8, 9, 10, 11, 12, 13, 14, 15, 16, 17, 18, 19, 20, 21, 22, 23, 24, 25, 26, 27, 28, 29, 30, 31, 32, 33, 34, 35, 36, 37, 38, 39, 40, 41, 42, 43, 44, 45, 46, 47, 48, 49, 50, 51, 52, 53, 54, 55, 56, 57, 58, 59, 60, 61, 62, 63, 64, 65, 66, 67, 68, 69, 70, 71, 72, 73, 74, 75, 76, 77, 78, 79, 80, 81, 82, 83, 84, 85, 86, 87, 88, 89, 90, 91, 92, 93, 94, 95, 96, 97, 98, 99, 100.

Annotations around the frame include:

- Top-left corner:  $2:2$
- Top-right corner:  $1:2$  with an upward arrow
- Bottom-left corner:  $2:1$  with a leftward arrow
- Bottom-right corner:  $2:3$  with a rightward arrow
- Bottom center:  $3:2$  with a downward arrow

The text "MIRRIAR.COM" is written diagonally across the center of the frame.

A technical drawing of a rectangular frame. A diagonal line runs from the top-left corner towards the bottom-right. Along this diagonal line, there are several small squares and rectangles, some of which are filled with a cross-hatch pattern. The text "NON-REFLECTIVE" is written along the diagonal line, oriented from top-left to bottom-right. At the top-left corner, there is a small square with the label "2:2" next to it. At the top-right corner, there is a small square with the label "1:2" and an upward-pointing arrow below it. At the bottom-left corner, there is a small square with the label "2:1" and a leftward-pointing arrow to its left. At the bottom-right corner, there is a small square with the label "2:3" and a rightward-pointing arrow to its right. In the center of the frame, there is a small square with the label "3:2" and a downward-pointing arrow below it.

A technical drawing of a rectangular frame. A diagonal line runs from the top-left corner towards the bottom-right. Along this diagonal line, there are several small squares and rectangles, some of which are filled with a cross-hatch pattern. The text "NON-CORRUPT" is written along the diagonal line, oriented from top-left to bottom-right. The text "1:2" is written at the top-left corner, "1:2" is written at the top-right corner, "2:1" is written at the bottom-left corner, and "2:3" is written at the bottom-right corner. Arrows point from each of these corner labels towards the center of the frame.

A technical drawing of a rectangular frame. A diagonal line runs from the top-left corner towards the bottom-right. Along this diagonal line, there are several small squares and rectangles, some of which are filled with a cross-hatch pattern. The text "NON-CORRUPT" is written along the diagonal line, following its slope. At the top-left corner, there is a small square with the text "2:2" next to it. At the top-right corner, there is a small square with the text "1:2" and an upward-pointing arrow next to it. At the bottom-left corner, there is a small square with the text "2:1" and a leftward-pointing arrow next to it. At the bottom-right corner, there is a small square with the text "3:2" and a downward-pointing arrow next to it. The entire drawing is enclosed in a rectangular border.

A technical drawing of a rectangular frame. A diagonal line runs from the top-left corner towards the bottom-right. Along this line, there are several small squares and rectangles, some of which are filled with a cross-hatch pattern. The text "NON-REFLECTING" is written along the diagonal line, oriented from top-left to bottom-right. The text "1:2" is written at the top-left corner, "1:2" at the top-right corner, "2:1" at the bottom-left corner, and "2:3" at the bottom-right corner. Arrows point from each of these text labels towards the center of the frame.

2:3

1:3

ПЕРЕД

БЕСПЛАТНЫЕ ВЫКРОЙ

←  
2:2

→  
2:4





2:4

ЭАННУЕ

1:4  
↑

КМ MIRPIAR.COM

←  
2:3

